

DPS P6 Link Extractor –Azure VM Evaluation and Test Environment

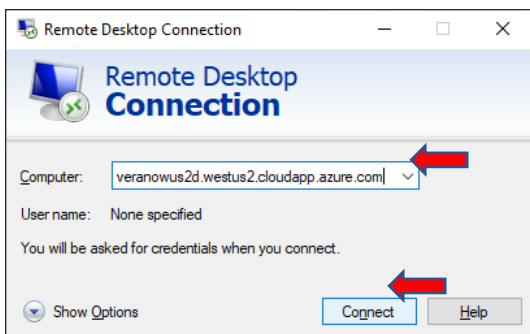
Summary

- Access to Evaluation VM1
- Run Primavera P6 Professional.....2
- Run DPS P6 Link Extractor3
- View Project Extracted Data on PowerBI4

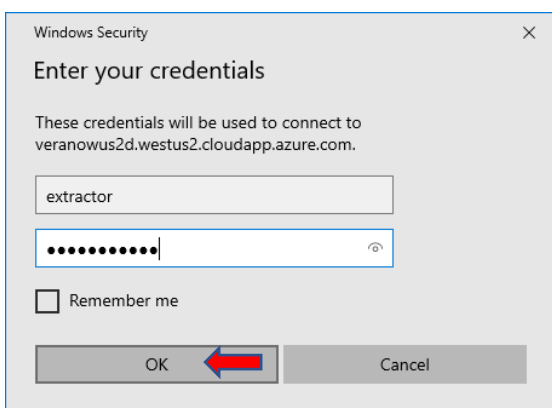
Access to Evaluation VM

Requires access to Internet and the Azure VM active during use period.

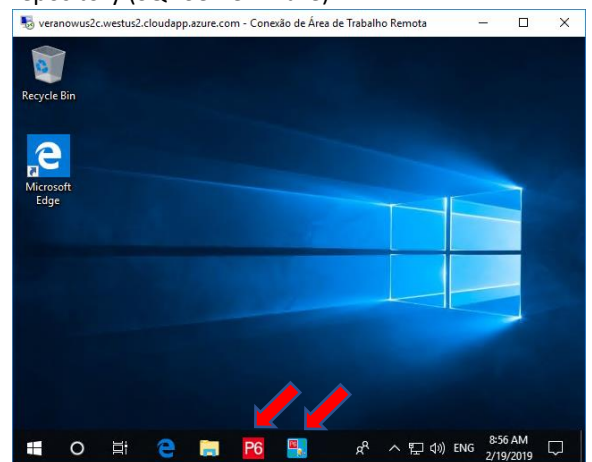
- Start Remote Desktop Connection, enter the address you received in “Computer” and click “Connect”:




- On “Enter your credentials” Windows, enter username/password you received and click “OK”:



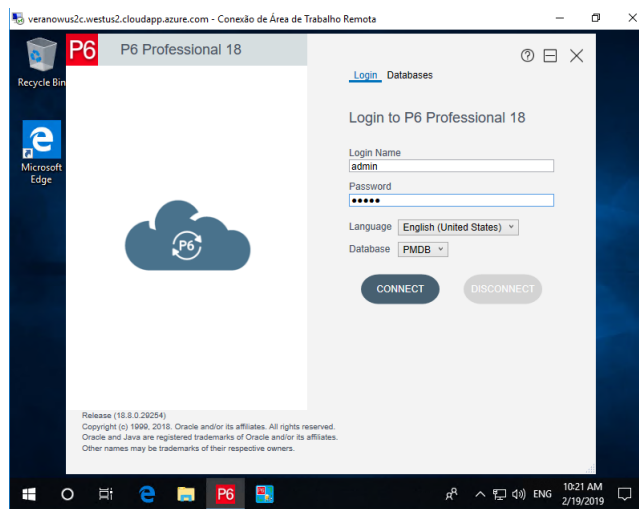
- Through remote desktop access you can use Primavera P6 Professional to import your Project to the evaluation environment and run DPS P6 Link Extractor to load your project’s data into DPS’ cloud repository (SQL Server Azure).



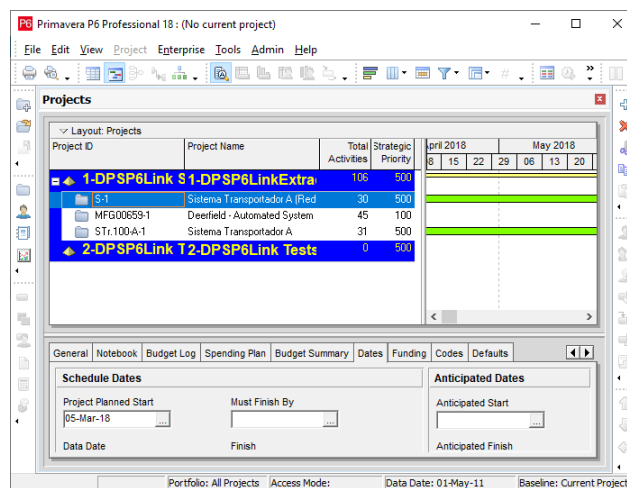
Run Primavera P6 Professional

To start the application, click on the icon .

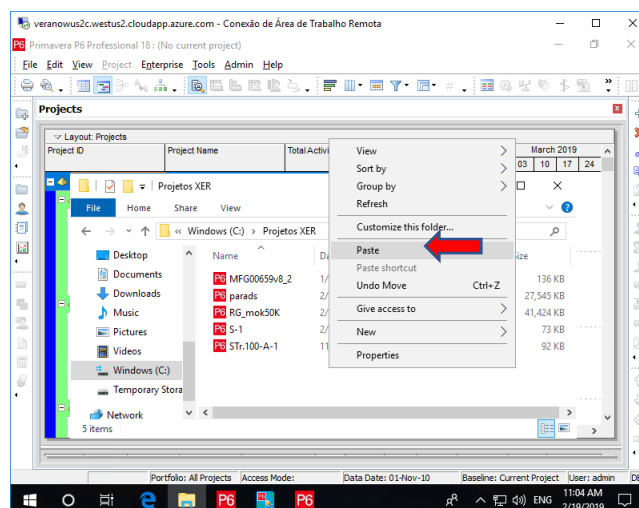
You will see the “Login to P6 Professional 18” window. Enter Login Name “admin”, Password “admin” and click on “CONNECT”:



Use Primavera P6 Professional to import and prepare your projects to extract data:



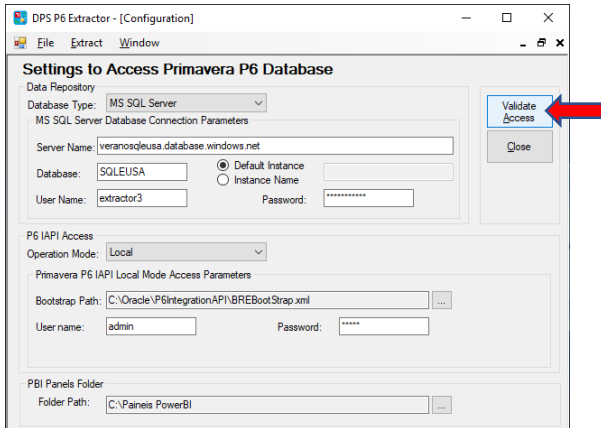
Note: To copy your XER files to the Azure VM, open Windows Explorer on your computer, select the files you want to copy (CTRL+C), go to the Remote Desktop Connection window, open Windows Explorer on Azure VM, find “C:\XER Projects” folder, right-click and choose “Paste” to copy files into this folder.



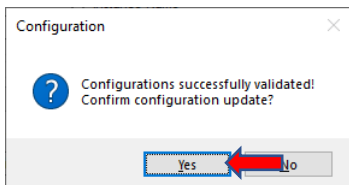
Run DPS P6 Link Extractor

Click on the icon  to start the application.

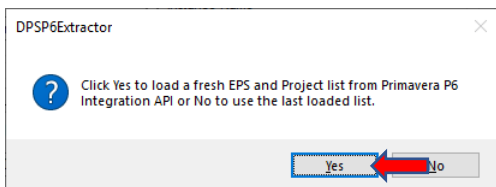
As the application starts you will see “Configuration” below. Click on “Validate Access” (you do not have to adjust any parameters on this VM).



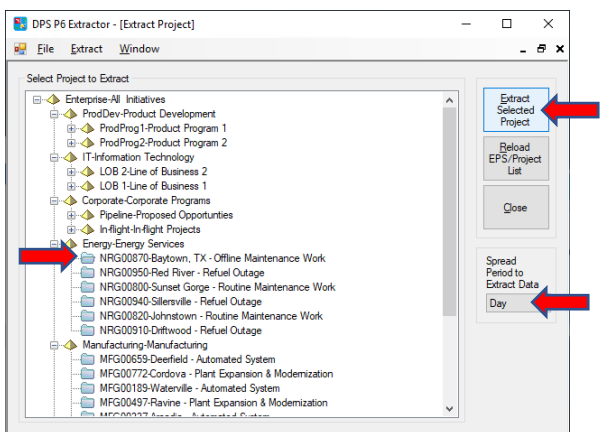
The application will validate configuration and will present the message below. Click “Yes”.



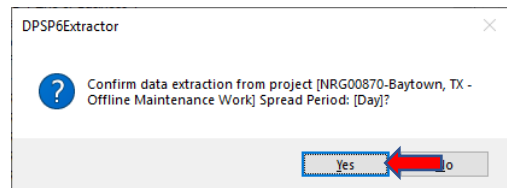
The application will ask if you want to reload EPS/Project list. Click “Yes”.



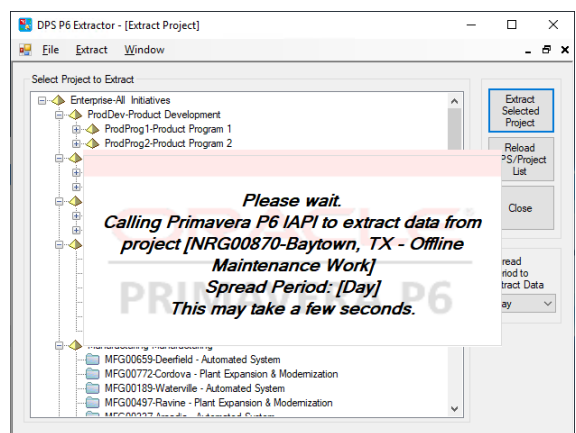
On the EPS/Project list, find the Project you want to extract data from, select it, choose the intended “Spread Period” and click “Extract Selected Project”.



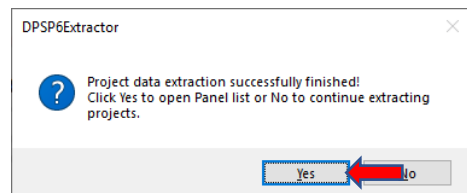
Click “Yes” to start data extraction from the selected Project, with the selected “Spread Period”.



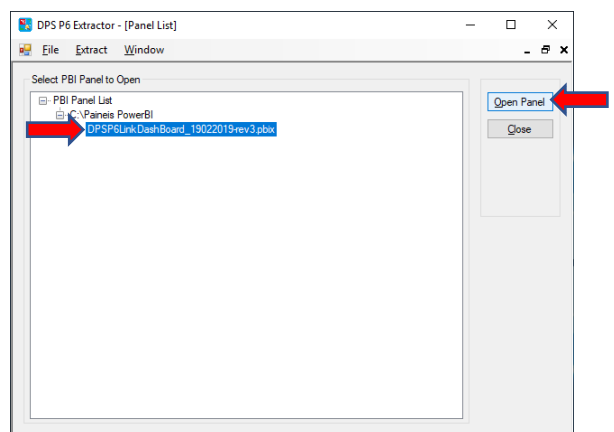
The application will present data extraction progress. The processing time will be proportional to the number of project activities, its duration and the chosen granularity of the distribution (“Spread Period”).



At the end of data extraction, you will see the message below. Click “Yes” to open panel list.

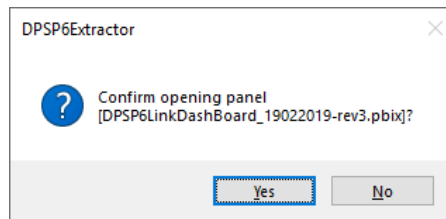


On the “Panel List” Window, select the panel you want to open and click “Open Panel”.

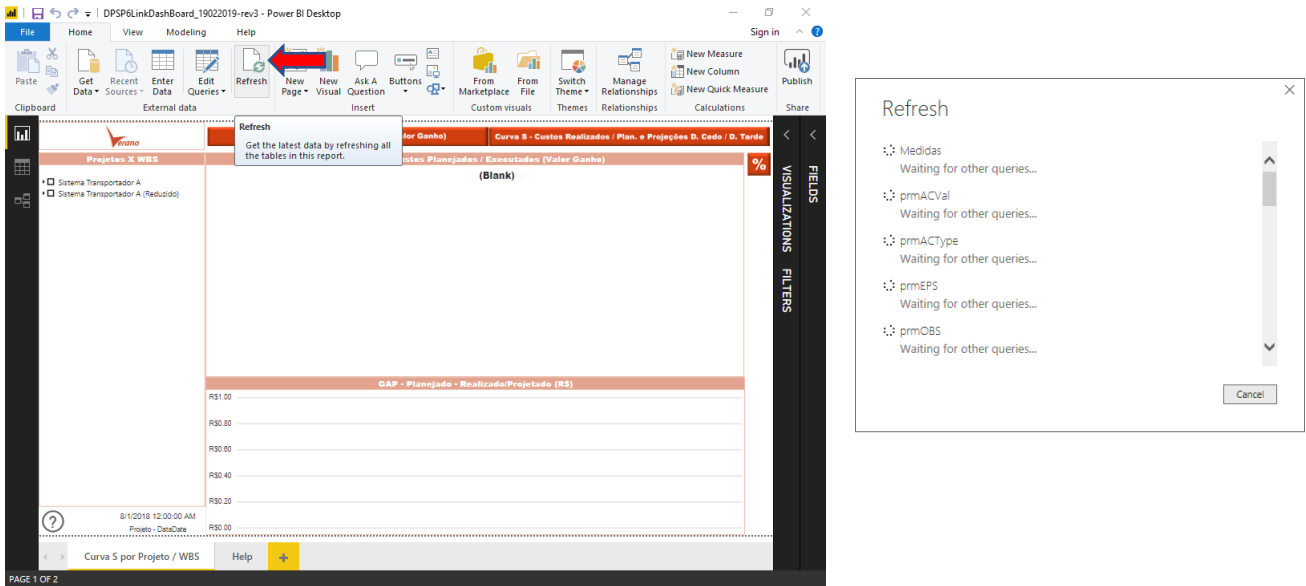


View Project Extracted Data on PowerBI

After clicking “Open Panel”, you will be prompted to confirm. Click “Yes”.



After the panel has been loaded in Power BI Desktop, you will see a window like the one below. Click the "Refresh" button to display updated data of the last extracted projects.



After completing the data update, new projects will be available for consultation.

